



**CENTRE
DEREHABILITATION
DES PRIMATES
DELWIRO**



CENTRE DE REHABILITATION DES PRIMATES DE LWIRO (CRPL)

IN THE DEMOCRATIC REPUBLIC OF CONGO'S SOUTH KIVU REGION, CRPL IS THE ONLY PRIMATE REHABILITATION CENTRE, MAKING IT CRITICAL TO THE COUNTRY'S CONSERVATION EFFORTS. CRPL IS PROGRESSING RAPIDLY, ENTERING A NEW PHASE OF DEVELOPMENT, IN WHICH A SECURE AND STABLE MANAGEMENT ADVISORY GROUP (MAG) IS ESSENTIAL IN ENSURING THE EXISTENCE OF A WORLD CLASS RESCUE, REHABILITATION AND REINTRODUCTION CENTRE FOR WILDLIFE CONSERVATION IN EASTERN DRC. WITH THE ASSISTANCE OF DIVERSE AND COMMITTED ORGANIZATIONS ACTING AS ADVISORS TO CRPL, LOCAL GOVERNMENT AGENCIES, AND PARTNER GROUPS, WE CAN PLAY A VITAL ROLE IN MEETING DRC'S CONSERVATION INITIATIVES.

L'Institut Congolais pour la Conservation de la Nature (ICCN), Centre de Recherche en Sciences Naturelles (CRSN) and Coopera ONGD (Spain) seek innovative organizations to form our Management Advisory Group to act on behalf of both CPRL and overall conservation efforts in DRC.

CRPL is managed by a team of three partners, with the support of multiple local and international sponsors.

L'Institut Congolais pour la Conservation de la Nature (ICCN), a government institution responsible for protected area management and in-situ/ex-situ wildlife in the Democratic Republic of Congo. The ICCN has full jurisdiction over all animals at the Centre and coordinates all wildlife confiscations. CPRL is included in both the operational and security plans for the Kahuzi-Biega National Park.

Centre de Recherche en Sciences Naturelles (CRSN), a government run institution is responsible for natural science research. The CRSN has ownership of all CRPL associated land and buildings. Coopera, a non-

governmental organization for development, founded in 1994 in Logroño Spain, has been a partner of the CRPL since 2006, taking on full financial responsibility at this time.

Pan African Sanctuary Alliance (PASA) welcomed the CRPL as its 19th member sanctuary in October 2010. PASA's commitment to and participation in the development of CRPL and the formation of a Management Advisory Group plays a critical role in meeting the centre's goals. PASA's extensive network of professionals, organizations and information will be invaluable in this process.

As of February 2011, the CRPL has been admitted into the Conservation Action Plan (CAP) for the Eastern landscape of DRC, highlighting the important role of sanctuaries in conservation efforts. As a part of this commitment, existing sanctuaries will be reinforced with no additional sanctuaries constructed at this time.



“A direct result of increased bushmeat and pet trades is increased confiscations of wild animals, especially primates. A large proportion of the animals received by CRPL come directly from these activities. Even more are simply unable to be saved.”

-CARMEN VIDAL - CHIEF VETERINARIAN

CRPL IS CRITICAL TO THE SURVIVAL OF PRIMATES IN DRC

CENTRE DE REHABILITATION DES PRIMATES DE LWIRO WAS FOUNDED IN 2003 WITH THE ARRIVAL OF ITS FIRST ORPHAN CHIMPANZEE. SINCE ITS INCEPTION CRPL HAS TAKEN IN OVER 50 CHIMPANZEES AND 60 MONKEYS REPRESENTING OVER 10 DIFFERENT SPECIES. CRPL PLAYS A VITAL ROLE IN CARING FOR CONFISCATED WILDLIFE AND IN PUTTING A STOP TO THE ILLEGAL ANIMAL TRADE IN DRC.

As the only chimpanzee and monkey sanctuary in the kivu region, the CRPL acts as a crucial resource for all conservation organizations working in the area. Currently housing over one hundred primates, CRPL has experienced tremendous growth over the past several years. With this growth, the Centre has embarked on large scale infrastructure development and creative ways to accommodate the vast influx of animals.

Unfortunately, CRPL is unable to single handedly meet the demands of DRC's wildlife and primates. Running costs, development requirements and the difficulties of existing in a country that possesses severe threats to endangered wildlife have put major financial and management strains on the organization.

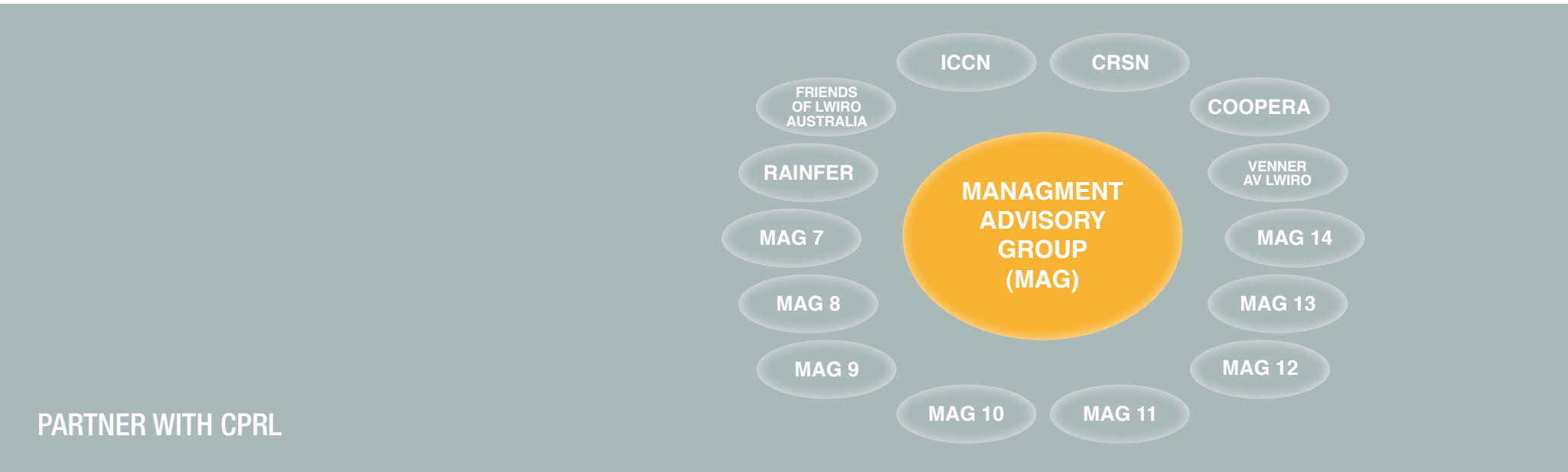
SOME OF THE THREATS FACING PRIMATES IN DRC INCLUDE:

COMMERCIAL LOGGING

Commercial logging is one of DRC's largest industries and an important source of employment. Logging increases access to isolated sectors of protected forest allowing even more illegal hunting, and as a result, the bush meat trade had become a mainstream and profitable activity in both rural and urban areas throughout the country.

MINING

Mining brings more people into new areas, putting pressure on surrounding ecosystems and rapidly depletes resources. In particular, the illegal coltan mining camps in and around Kahuzi Biega National Park have caused an increase in bush meat hunting with recent surveys indicating a resulting decline in chimpanzee and other primate populations.



PARTNER WITH CPRL



L'Institut Congolais pour la Conservation de la Nature (ICCN), the Centre de Recherche en Sciences Naturelles (CRSN) and Coopera ONGD seek innovative organizations to form a **Management Advisory Group (MAG)** for Centre de Rehabilitation des Primates des Lwiro to act on behalf of both the organization and overall conservation efforts in DRC.

In order to help ensure the survival and growth of CRPL, a Management Advisory Group, consisting of multiple organizations committed to supporting the Centre, is critical. Consisting of twelve to fourteen organizations, the MAG will support the Centre's financial and logistical needs and goals over a five year period, with each organization providing a minimum of \$15,000 per year in operational grants. Through this agreement, participating organizations will ensure the continued existence of the sanctuary as well as its future growth and development. All partners will recognize CRPL as an invaluable resource for the protection, rehabilitation and eventual release of primates in the Democratic Republic of Congo.

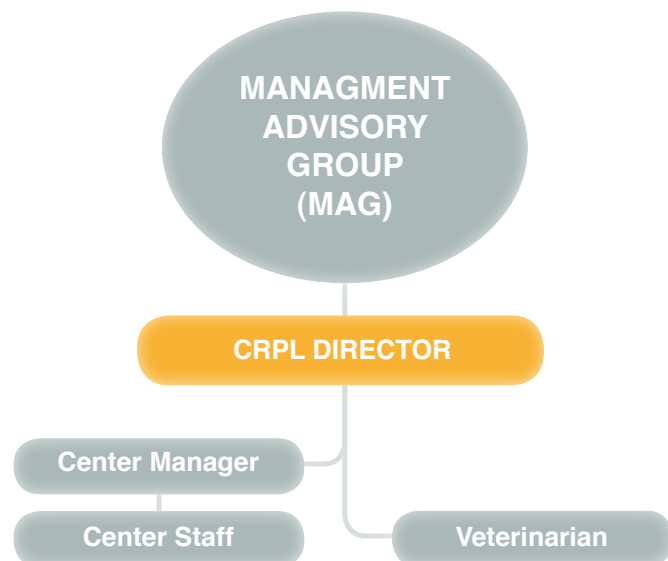
Each Management Advisory Group member will contribute to the development and management of CRPL over a five year period with the goal of creating an independent organization able to meet all financial, administrative and technical needs. Each member organization identified will appoint one representative for the MAG. And each representative will be allocated a place on an appropriate steering committee.

CRPL's MAG will be an international collective working together to develop and implement long-term conservation strategies for eastern DRC's wildlife and habitats, including the operation of a wildlife rescue and rehabilitation centre in Eastern DRC for orphaned and confiscated animals with an emphasis on chimpanzees and other primates. The MAG will provide financial, technical and administrative support and guidance to the CRPL management team to ensure the care and welfare of its entrusted animals operating under Pan African Sanctuary Alliance (PASA) recommendations and minimum standards.



PARTNER WITH CPRL Continued...

CRPL OPERATING STRUCTURE



Activities of the CPRL MAG will include conservation education, ecotourism, reintroduction research and implementation, improved habitat management and protection, great ape medicine training, community participation and program development and overall capacity building.

CRPL's Management Advisory Group will work in collaboration with all partners to manage, maintain and expand the Centre's rehabilitation facility with the primary goals of ensuring the long term care of orphaned, abandoned and confiscated primates and other wildlife, and the development of conservation education and public awareness programs.

Through the collaborative efforts of MAG members and CRPL partners, increased understanding and appreciation of wildlife in DRC can be realized, greatly reducing the number of wild animals being killed for food, live trade or traditional beliefs. Capacity building and training programs for local Congolese will provide the skills and resources necessary to protect native species and habitats. Infrastructure development will ensure

quality care for confiscated wildlife and education programs will instill pride in preserving DRC's unique wildlife and ecosystems.

With the support of committed partners, CRPL can continue its important work in creating a holistic environment in which both animals and humans thrive and prosper. With the creation of a Management Advisory Group, CRPL and local partners can successfully move the country toward a greater dedication to the protection and future survival of DRC's wildlife, ecosystems and communities.

For further information contact:

lwiroprimates@gmail.com

